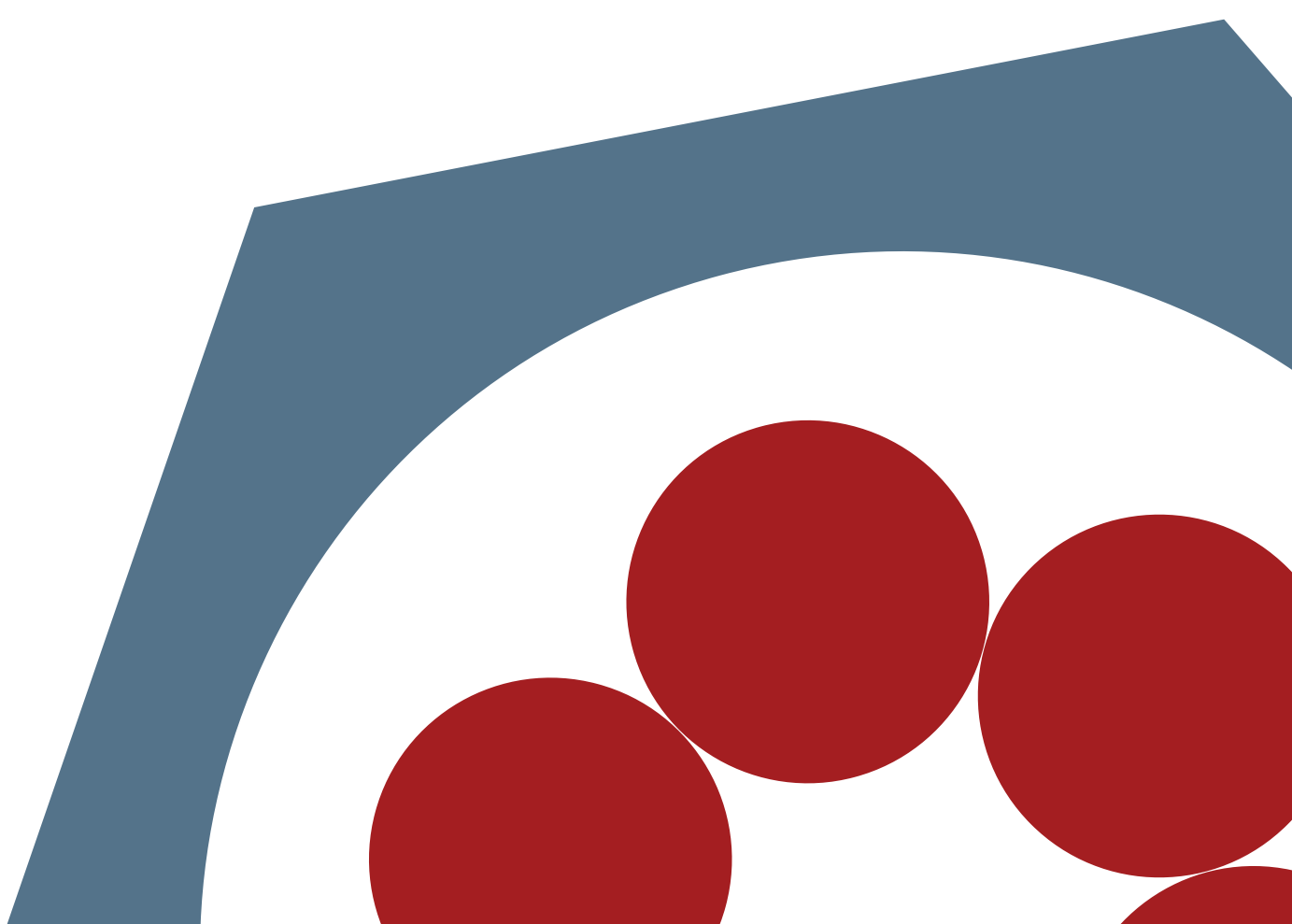




# Concretum® Q-Flash 5/20

---

The rapid-hardening concrete with various application possibilities





## Advantages

Fast hardening

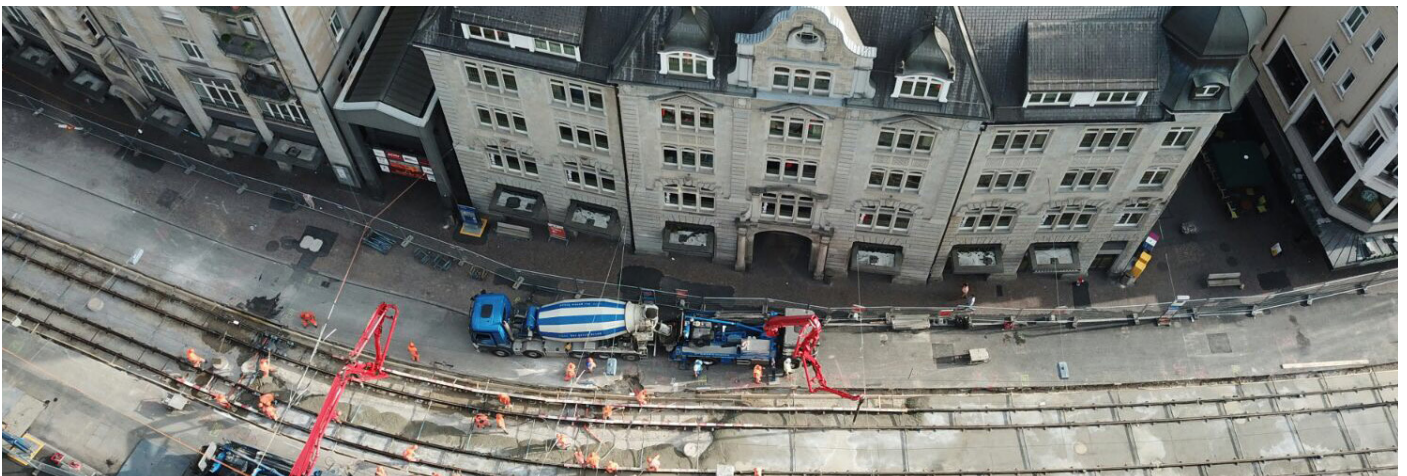
Easy to apply

Fast drying

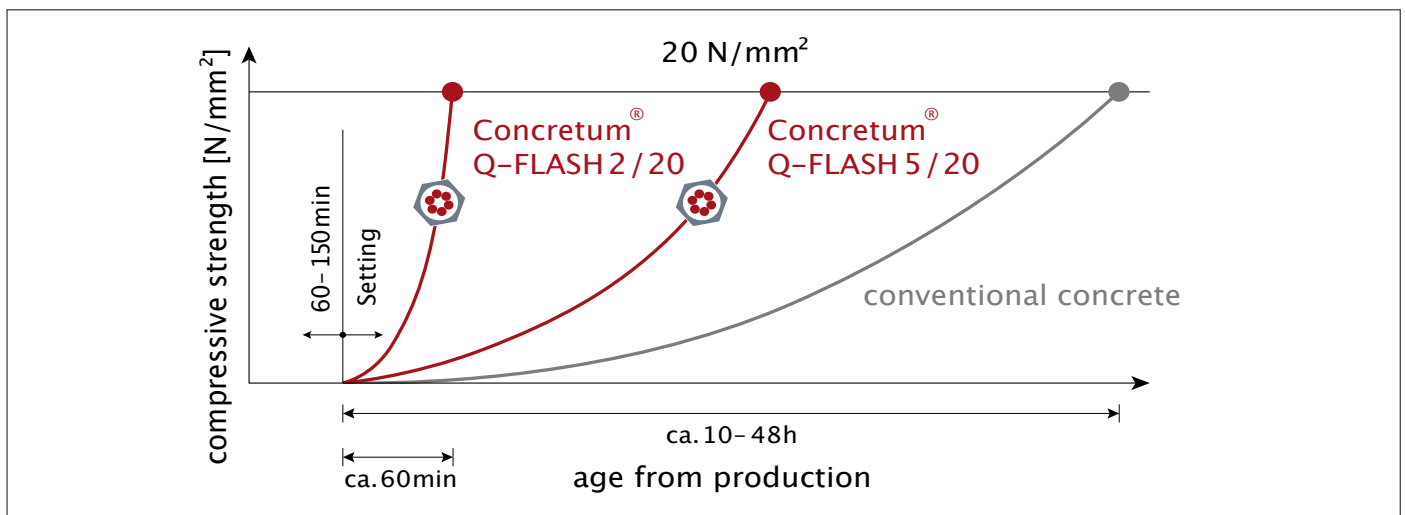
Large quantities

Low temperatures

Cost-effective



renewal of tram tracks - „Zurich City“





To accelerate the construction progress economically and efficiently, early-strength concrete is becoming increasingly important not only in infrastructure but also in the following areas of application:

### Building construction

- **Early formwork removal**
- **Fast drying**

For early application of waterproofing on flat roofs, ceilings and floors



renewal of railway tunnel base - "Russentunnel"

### Civil engineering

- **Infrastructure surfaces**  
Short closure times,  
acceleration of subsequent work steps
- **Securing of excavation pits**
- **Special foundation engineering**



casting of railway bridge deck - "Senseviadukt"

### Winter concrete

- **Rapid strength development**
- **Rapid dehumidification**
- **Even at very low temperatures**

### Precast industry

- **Precast concrete elements**  
Early formwork removal



renewal of railway bridge - "Gornergratbahn"

## Technical properties

Strength class	C40/50
Exposure class	XC4, XD3, XF2
Max. aggregate size	8-32 mm
Consistency	low slump to pumpable
Strength development	$f_c > 20 \text{ N/mm}^2$ after 5 h
Concrete moisture	$\leq 4 \text{ CM-\%}$ after 6 h
Open time adjustable	up to 150 min
Fresh concrete temperature	5 - 30 °C



**Concretum Construction Science AG**

Steinackerstrasse 56  
CH-8302 Kloten  
Switzerland

[www.concretum.com](http://www.concretum.com)  
[info@concretum.com](mailto:info@concretum.com)  
+41 44 445 13 46